

www.implantium.com

# OSTEON™

**Interconnected Pore  
HA +  $\beta$ -TCP Coating**  
HA scaffold coated with  $\beta$ -TCP

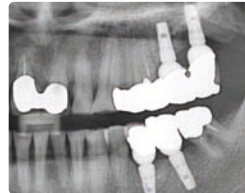
Human bone



- Ridge Augmentation
- Sinus Lift
- Extraction Site
- Periodontal Defect
- Cystic Cavities



### OSTEON™ clinical case



The OSTEON™ case for extraction of periodontal disease

### 2 weeks after extraction

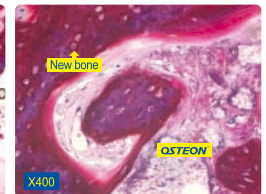
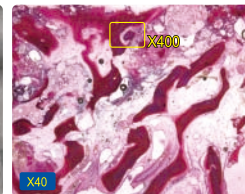


### 17 weeks after GBR



Photo: INNO Dental Clinic / Dr. Il Yeon Kim

### In vitro test of OSTEON™ Sinus Grafting - After 7.5 months



Australia	T +61-2-9874-0183	Lebanon	T +961-1254515	Saudi Arabia	T +961-3-10-1211
China	T +86-10-6280-0505	Mexico	T +52-664-638-3398	Singapore	T +65-6767-1311
Hong Kong	T +852-3741-1222	Poland	T +48-22-313-0885	Taiwan	T +886-2-2706-1279
Iran	T +98-21-4426-5178	Romania	T +40-21-410-8326	Uzbekistan	T +99871-144-3055
Korea	T +82-2-501-8560	Russia	T +7(495)-232-3952		

**IMPLANTIUM**

www.implantium.com

Dentium USA 11075 Knott Ave., Suite A, Cypress, CA 90630, USA T +1-714-895-7278 F +1-714-890-6360